

HSVTC Saws and Handles Etc. as of 15 June 2006

28 October 2021 14:31

Contents

1	High Sierra Volunteer Trail Crew (HSVTC)	3
2	Unusable Two Man Saw Handles	4
2.1	Saw Handles 34 and 35	4
2.1.1	Saw Handle 34	7
2.1.2	Saw Handle 35	8
2.2	Saw Handles 36 and 37	10
2.2.1	Saw Handle 36	10
2.2.2	Saw Handle 37	12
2.3	Saw Handle 38	13
3	Usable Two Man Saw Handles	14
3.1	Saw Handles 41 and 42	14
3.1.1	Saw Handle 41	15
3.1.2	Saw Handle 42	17
3.2	Saw Handles 43 and 44	19
3.2.1	Saw Handle 43	20
3.2.2	Saw Handle 44	23
3.3	Saw Handles 45 and 46	25
3.3.1	Saw Handle 45	26
3.3.2	Saw Handle 46	28
3.4	Saw Handles 47 and 48	29
3.4.1	Saw Handle 47	30
3.4.2	Saw Handle 48	31
3.5	Saw Handle 49	32
3.6	Saw Handles 50 and 51	34
3.6.1	Saw Handle 50	36
3.6.2	Saw Handle 51	43
3.7	Saw Handles 52 and 53	50
3.7.1	Saw Handle 52	52
3.7.2	Saw Handle 53	55

⁰”Old HSVTC Saw Handles”.tex 28 October 2021 14:31

4	Supplemental Saw Handles 61 → 66	57
4.1	Saw Handle 61	58
4.2	Saw Handle 62	60
4.3	Saw Handle 63	63
4.4	Saw Handle 64	65
4.5	Saw Handle 65	67
4.6	Saw Handle 66	68
5	Handle Data	71
5.1	Part 1, Two Man Crosscut Saw Handles, #41 → #44	71
5.2	Part 2, Two Man Crosscut Saw Handles, #45 → #48	71
5.3	Part 3, One Man Crosscut Saw Supplemental Handles #61 → #66	72
5.4	Part 4, Misc Handles, #34 → #33 and #49, FF and FS	73
5.5	Saw Data Work Sheet	75

1 High Sierra Volunteer Trail Crew (HSVTC)

In the spring of 2002 I discovered the HSVTC. A group of volunteers that worked in the Sierra Nevada range near Fresno California doing trail maintenance work. Much of the work was done in the “primitive”/“wilderness” areas of the mountains. In these areas it is unusual to be able to use powered tools. The only exception is when the Forest Supervisor specifically permits the use of power tools for working on especially difficult areas. Difficult areas are places where an avalanche has caused serious trail damage or on trails that have not been maintained for many years. Working with the HSVTC I discovered the use of old two man crosscut saws and was amazed at what, and how, they worked and performed. The technology in these 100+ year old equipment was, and still is, amazing to me. The basic design of a crosscut saw didn’t change starting somewhere in the late 1800s. There are some specialized custom crosscut saws that are used in sawing competition, however I have never seen one of them “on the trail”.

After working with the HSVTC, I eventually became a crew leader and took out teams of 5 to 17 for a days work on the trail. I also did maintenance of the tools. Eventually I had to drop out of the trail crew work and they continued on. At one point our charismatic leader died in a helicopter accident and a few years later it is unclear what happened to it. When the trail crew “disappeared”, there is no indication of what happened to their tools etc. When I left the trail crew I was in the process of taking pictures of the various saws and saw handles. I was only able to get photos of the saw handles and was about to get pictures of the saws but failed to get any usable ones.

This short memo is my record of the saw handles and a quick written record of the HSVTC’s crosscut saws. When I stopped being fully active in the HSVTC, except for obvious error fixes there is no new information in here since I originally collected the data in 2006 and 2007. I mostly stopped working with the trail crew about 2014.

2 Unusable Two Man Saw Handles

2.1 Saw Handles 34 and 35

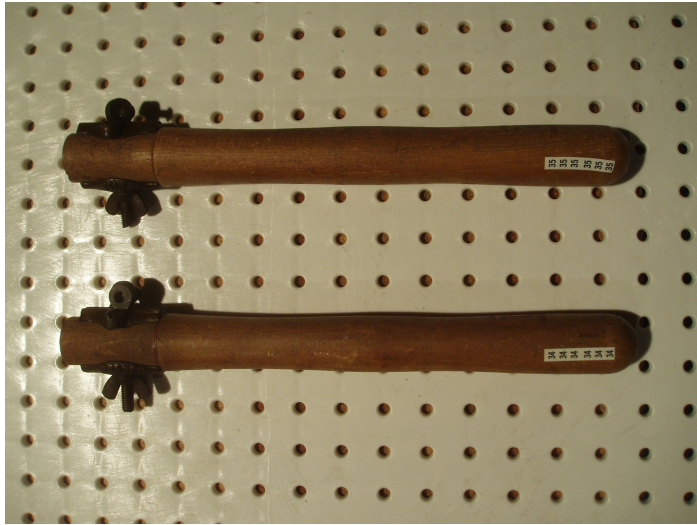
These appear to be a matching pair of semi-western handles that are missing the ferrule and are not usable until ferrules are replaced. Otherwise the condition is fair. Handles are marked "Disston 101" and have a "Key stone" symbol.



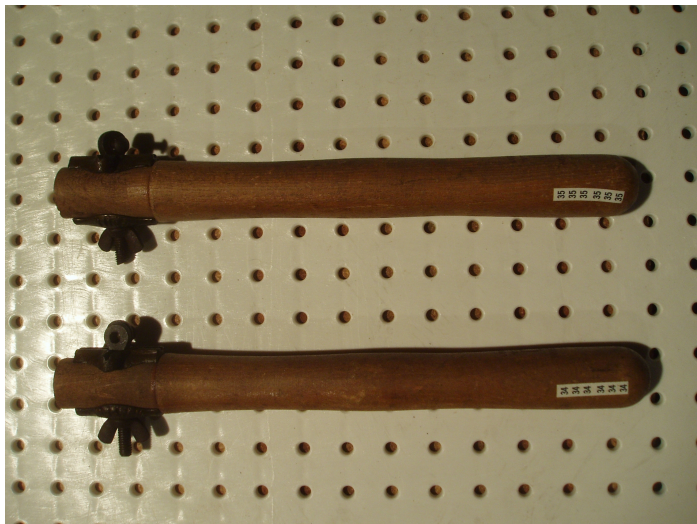
PA080082 10/08/2005 08:37 PM



PA080093 10/08/2005 08:40 PM



P1190027 01/19/2006 10:23 PM



P1190028 01/19/2006 10:23 PM



P1190035 01/19/2006 10:25 PM



P1190036 01/19/2006 10:25 PM



P1190037 01/19/2006 10:27 PM

2.1.1 Saw Handle 34



PA080094 10/08/2005 08:40 PM



P1190025 01/19/2006 10:22 PM

2.1.2 Saw Handle 35



PA080095 10/08/2005 08:40 PM



P1190026 01/19/2006 10:23 PM

2.2 Saw Handles 36 and 37

These are two dissimilar handles that happened to be photographed together.



PA080083 10/08/2005 08:37 PM

2.2.1 Saw Handle 36

This is semi-western handle that is incomplete in that it is missing the cross pin used to hold the saw. Otherwise the condition is good. Similar to a Disston #22 style handle. (Replaced the cross pin on 25JAN06.



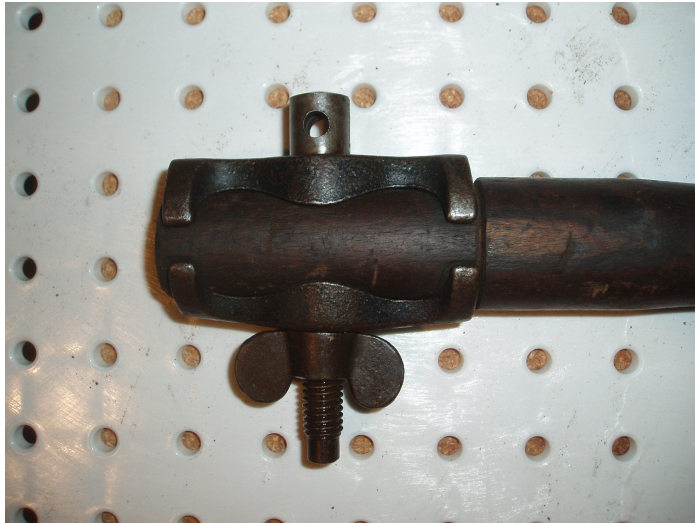
P1190029 01/19/2006 10:23 PM



P1190032 01/19/2006 10:24 PM



P1190033 01/19/2006 10:24 PM



P1190034 01/19/2006 10:25 PM

2.2.2 Saw Handle 37

This is a western handle that is rust-frozen and has a broken wing nut. One of the castings says "Disston". Not usable.



PA080089 10/08/2005 08:38 PM

2.3 Saw Handle 38

This is a western handle that is short, oval and missing its finger guard. Is usable, but unsafe because of the missing finger guard.



PA080084 10/08/2005 08:37 PM



P1190031 01/19/2006 10:24 PM

3 Usable Two Man Saw Handles

3.1 Saw Handles 41 and 42

41, 42: These appear to be matching pair of western style handles that have all their parts and are in good overall condition.



PA080030 10/08/2005 08:19 PM



P1190016 01/19/2006 10:19 PM

3.1.1 Saw Handle 41



PA080032 10/08/2005 08:20 PM



P1190014 01/19/2006 10:18 PM



P1190017 01/19/2006 10:19 PM

3.1.2 Saw Handle 42



PA080033 10/08/2005 08:20 PM



P1190015 01/19/2006 10:18 PM



P1190018 01/19/2006 10:19 PM

3.2 Saw Handles 43 and 44

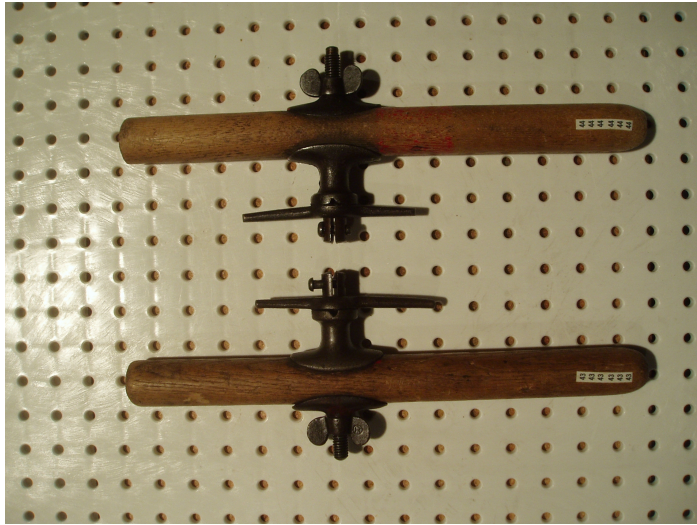
43, 44: These appear to be matching pair of western style handles that have all their parts and are in good overall condition.



PA080031 10/08/2005 08:20 PM



P1190005 01/19/2006 10:14 PM



P1190006 01/19/2006 10:14 PM

3.2.1 Saw Handle 43



PA080034 10/08/2005 08:20 PM



P1190003 01/19/2006 10:14 PM



P1190008 01/19/2006 10:15 PM

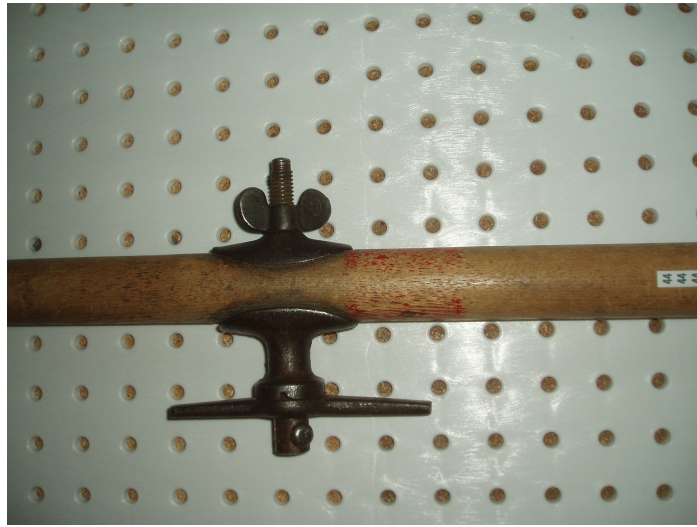


P1190009 01/19/2006 10:15 PM



P1190007 01/19/2006 10:15 PM

3.2.2 Saw Handle 44



PA080035 10/08/2005 08:20 PM



P1190004 01/19/2006 10:14 PM

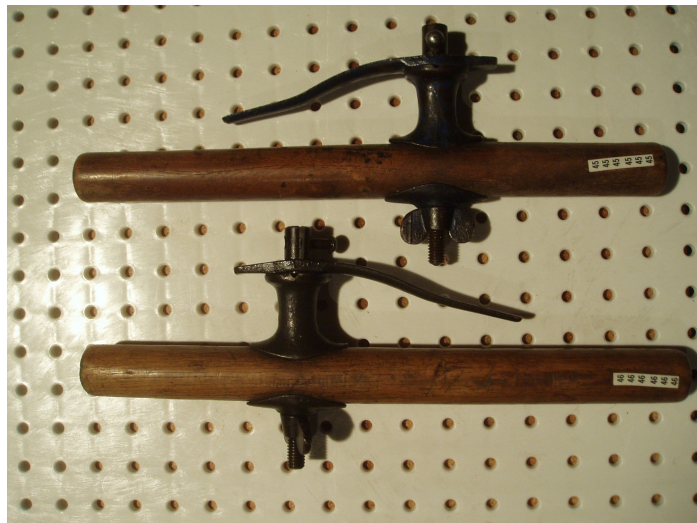


P1190010 01/19/2006 10:15 PM

3.3 Saw Handles 45 and 46

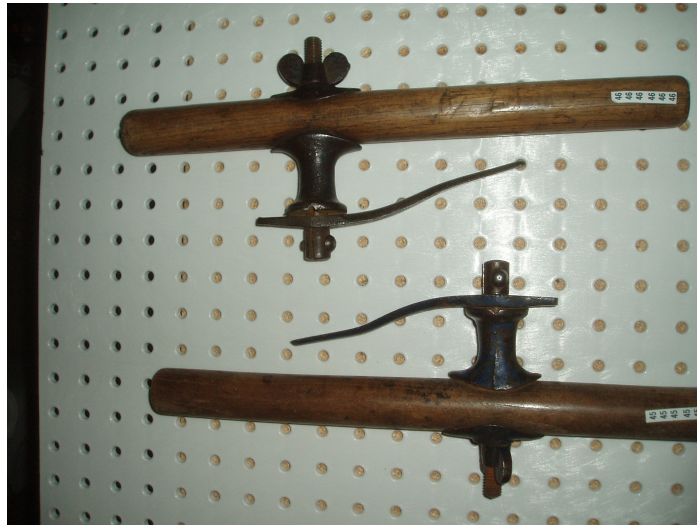


P1190021 01/19/2006 10:20 PM



P1190022 01/19/2006 10:20 PM

3.3.1 Saw Handle 45



PA080036 10/08/2005 08:21 PM



PA080038 10/08/2005 08:22 PM



P1190020 01/19/2006 10:20 PM

3.3.2 Saw Handle 46

46: This is a western style handle that has all its parts and is in good overall condition. Similar to #45.

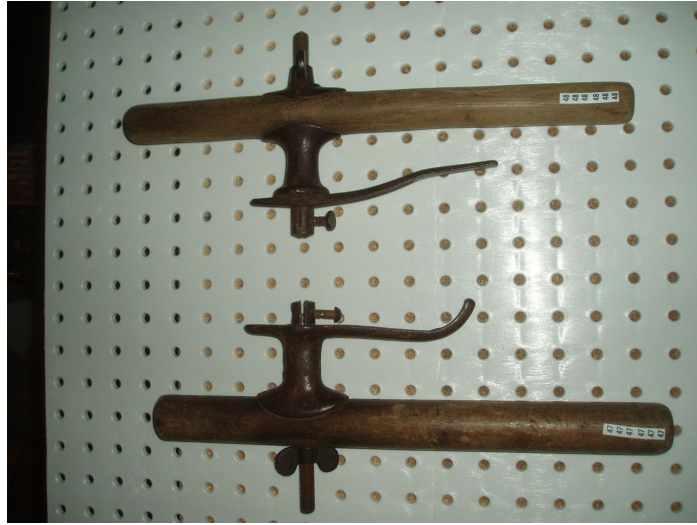


PA080039 10/08/2005 08:22 PM



P1190019 01/19/2006 10:20 PM

3.4 Saw Handles 47 and 48



PA080037 10/08/2005 08:22 PM

3.4.1 Saw Handle 47

47: This is a western style handle that is missing the back plate. Otherwise it is good overall condition.



PA080040 10/08/2005 08:22 PM



P1190023 01/19/2006 10:21 PM

3.4.2 Saw Handle 48

48: This is a western style handle that has all its parts and is in good overall condition.



PA080041 10/08/2005 08:22 PM



P1190024 01/19/2006 10:22 PM

3.5 Saw Handle 49

49: This is a western style handle that has all its parts and is in good condition



PA080042 10/08/2005 08:23 PM



PA080043 10/08/2005 08:23 PM



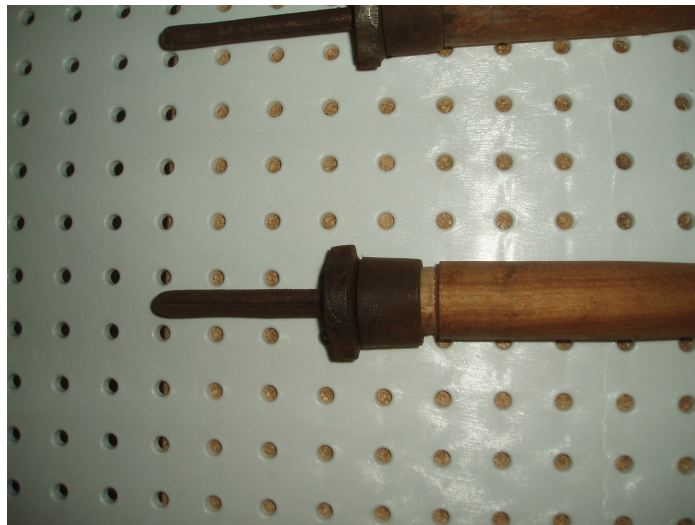
P1190030 01/19/2006 10:24 PM

3.6 Saw Handles 50 and 51

50, 51: These appear to be a matching pair of eastern style handles that have all their parts and are in good overall condition. Similar to Simonds #88 type handles.



PA080044 10/08/2005 08:23 PM



PA080045 10/08/2005 08:23 PM



PA080047 10/08/2005 08:24 PM



PA080096 10/08/2005 09:01 PM

3.6.1 Saw Handle 50



PA080085 10/08/2005 08:38 PM



PA080086 10/08/2005 08:38 PM



PA080087 10/08/2005 08:38 PM



PA080088 10/08/2005 08:38 PM



PA080090 10/08/2005 08:39 PM



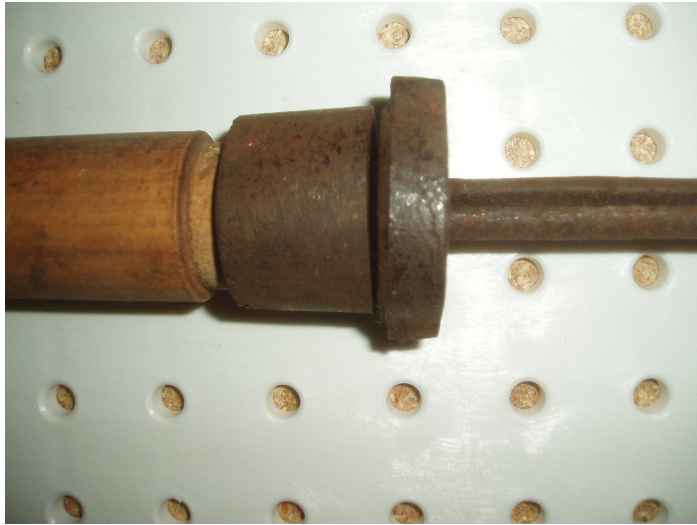
PA080091 10/08/2005 08:39 PM



PA080092 10/08/2005 08:39 PM



PA080097 10/08/2005 09:02 PM



PA080099 10/08/2005 09:02 PM



PA080101 10/08/2005 09:02 PM



PA080102 10/08/2005 09:03 PM



PA080103 10/08/2005 09:04 PM



PA080104 10/08/2005 09:04 PM

3.6.2 Saw Handle 51



PA080098 10/08/2005 09:02 PM



PA080100 10/08/2005 09:02 PM



PA080105 10/08/2005 09:05 PM



PA080106 10/08/2005 09:05 PM



PA080107 10/08/2005 09:05 PM



PA080108 10/08/2005 09:06 PM



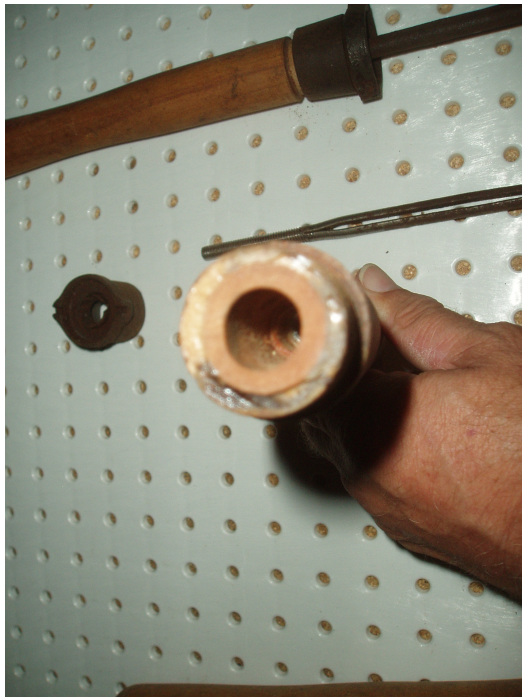
PA080109 10/08/2005 09:06 PM



PA080110 10/08/2005 09:06 PM



PA080111 10/08/2005 09:07 PM



PA080112 10/08/2005 09:07 PM



PA080113 10/08/2005 09:08 PM



PA080114 10/08/2005 09:08 PM



PA080115 10/08/2005 09:09 PM



PA080116 10/08/2005 09:09 PM

3.7 Saw Handles 52 and 53

52, 53: These appear to be a matching pair of unknown style short handles that have all their parts and are in good overall condition.



PA080048 10/08/2005 08:24 PM



PA080051 10/08/2005 08:25 PM



PA080053 10/08/2005 08:25 PM



PA080056 10/08/2005 08:26 PM

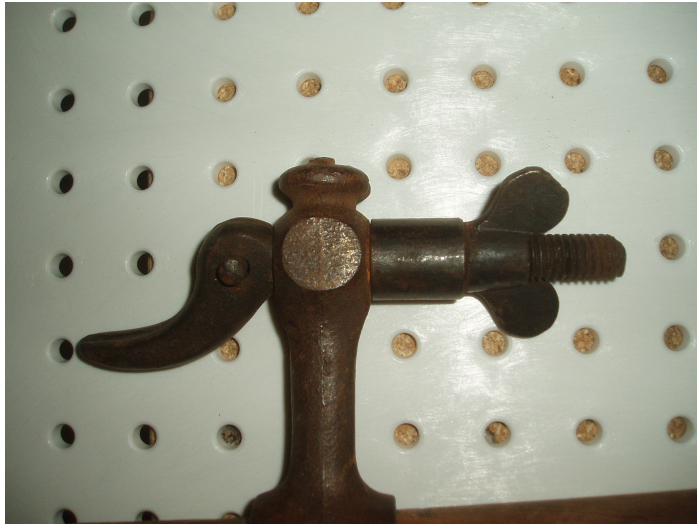


P1190013 01/19/2006 10:17 PM

3.7.1 Saw Handle 52



PA080049 10/08/2005 08:24 PM



PA080054 10/08/2005 08:25 PM



PA080055 10/08/2005 08:26 PM



P1190011 01/19/2006 10:16 PM

3.7.2 Saw Handle 53



PA080050 10/08/2005 08:24 PM



PA080057 10/08/2005 08:26 PM



P1190012 01/19/2006 10:17 PM

4 Supplemental Saw Handles 61 → 66



PA080058 10/08/2005 08:30 PM

4.1 Saw Handle 61

61: This is a one man supplementary handle which is in fair condition and is complete.



PA080059 10/08/2005 08:30 PM



PA080079 10/08/2005 08:33 PM



PA080080 10/08/2005 08:34 PM



PA080081 10/08/2005 08:34 PM

4.2 Saw Handle 62

62: This is a one man supplementary handle which is in good condition and is complete.



PA080060 10/08/2005 08:30 PM



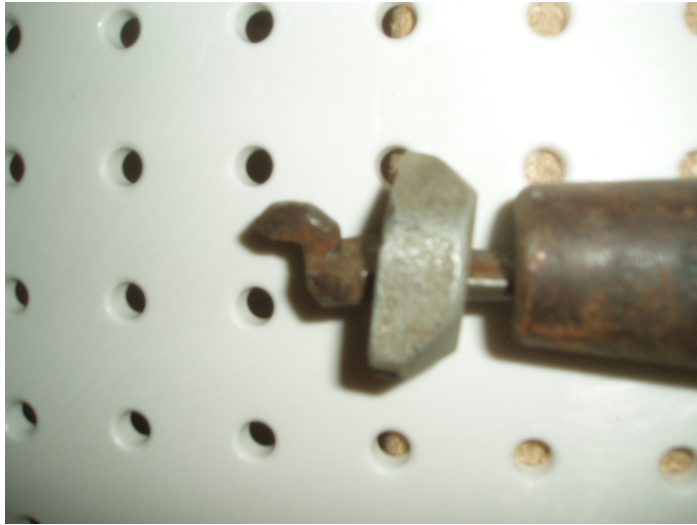
PA080065 10/08/2005 08:31 PM



PA080066 10/08/2005 08:31 PM



PA080067 10/08/2005 08:31 PM



PA080070 10/08/2005 08:32 PM

4.3 Saw Handle 63

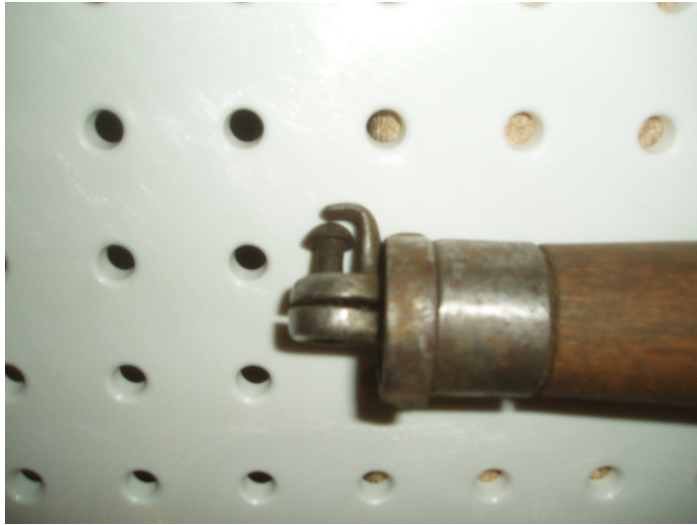
63: This is a one man supplementary handle which is in good condition and is complete.



PA080061 10/08/2005 08:30 PM



PA080068 10/08/2005 08:32 PM



PA080069 10/08/2005 08:32 PM

4.4 Saw Handle 64

64: This is a one man supplementary handle which is in good condition and is complete.



PA080062 10/08/2005 08:31 PM



PA080071 10/08/2005 08:32 PM



PA080072 10/08/2005 08:32 PM



PA080073 10/08/2005 08:32 PM

4.5 Saw Handle 65

65: This is a one man supplementary handle which is in good condition and is complete.



PA080064 10/08/2005 08:31 PM

4.6 Saw Handle 66

66: This is a one man supplementary handle which is in fair condition and is complete.



PA080063 10/08/2005 08:31 PM



PA080074 10/08/2005 08:33 PM



PA080076 10/08/2005 08:33 PM



PA080077 10/08/2005 08:33 PM



PA080078 10/08/2005 08:33 PM



PA080075 10/08/2005 08:33 PM

5 Handle Data

5.1 Part 1, Two Man Crosscut Saw Handles, #41 → #44

Item	#41	#42	#43	#44
Weight	1 lb, 2 oz.	1 lb, 2 oz.	1 lb, 2 oz.	1 lb, 2 oz.
Handle				
Diameter	1.3	1.3	1.27	1.3
Length	12 1/8	12	13 7/8	14
TB Hole	.48	.48	.45	.43
TB Hole above short end	5 1/2	5 3/8	5 3/4	5 3/4
Through Bolt				
Length	5.7	5.74	5.1	5 3/8
Dia in handle	.45	.43	.41	.41
Thread Dia.	7/16	27/64	7/16	7/16
TPI	14	14?	14	14
Rivet				
Diameter	1/4	1/4	1/4	1/4
Length	3/4	3/4	3/4	3/4

5.2 Part 2, Two Man Crosscut Saw Handles, #45 → #48

Item	#45	#46	#47	#48
Weight	1 lb, 6 oz.	1 lb, 6 oz.	1 lb, 3 oz.	1 lb, 1 oz.
Handle				
Diameter	1 1/4	1.3	1.3	1.12
Length	14	14 1/8	14 5/8	14
TB Hole	.43	.43	1/2	.43
TB Hole above short end	5 1/4	5	4 1/4	5 1/8
Through Bolt				
Length	5 3/4	5.7	5 7/8	5 3/4
Dia in handle	0.44	0.4	0.4	.44
Thread Dia.	7/16	7/16	13/32	27/64
TPI	14	14	14	14
Rivet				
Diameter	1/4	1/4	1/4	1/4
Length	3/4	3/4	3/4	3/4

5.3 Part 3, One Man Crosscut Saw Supplemental Handles #61 → #66

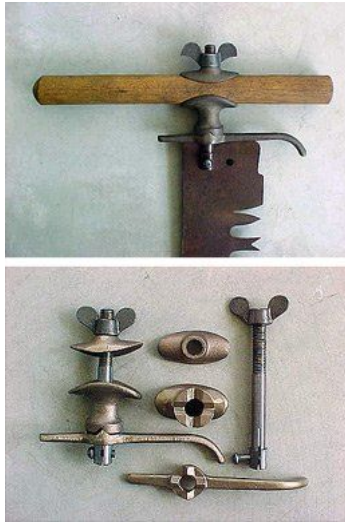
Item	#61	#62	#63	#64	#65	#66
Weight	8 oz.	8 oz.	8 oz.	8 oz.	8 oz.	8 oz.
Handle						
Diameter Min	1.06	1.13	1.07	1.09	1.06	1.17
Diameter Max	1 1/4	1.28	1.31	1.30	1.27	1.34
Ferrule Length	.65	2	1.03	.65	.65	1.53
Nut Depth	1.57	1.28	1 3/8	1.55	1.54	1.19
Length, includes ferrule	5.30	5.18	5.40	5.21	5.28	4 3/4
Long Split Bolt						
Length	3 1/2	3.4	3.7	3 1/2	3.6	3.9
Dia in handle	.43	—	.35	.44	.44	.38
Length of Threads	1.34	1.48	1.61	1.04	1.43	1.14
Thread Dia.	3/8	5/16	11/32	3/8	3/8	5/16
TPI	16	18	16	16	16	18
Rivet						
Diameter	.217	—	.201	.218	.219	.185
Length	.855	—	.677	.871	.854	.587

5.4 Part 4, Misc Handles, #34 → #33 and #49, FF and FS

Item	#34	#35	#36	#37	#38	#49	FF	FS
Weight	8 oz.	8 oz.	1 lb.	1 lb.	1 lb.	1 lb.	—	—
Handle								
Diameter Min	1 1/4	1 1/4	1.21	1 1/4	1.16	1.32	—	1 1/4
Diameter Max	1 3/8	1 3/8	1.34	—	1.32	—	—	—
Dia at Ferrule	1.15	1.15	1.18	—	—	—	—	—
Length	12 3/4	12 3/4	13 5/8	13 3/4	8 1/16	9 3/4	—	13 7/8
TB Hole	.43	.43	1/2	—	.45	.54	—	1/2
TB Hole above short end	1 3/8	1 3/8	1 5/8	6	3 3/8	4 1/3	—	5 1/2
Through Bolt								
Length	3.12	3.12	3.83	5.83	5.83	5.88	5 1/4	5 3/4
Dia in handle	.384	.384	.485	—	7/16	.436	1/2	7/16
Thread Dia.	5/16	5/16	7/16	7/16	7/16	7/16	1/2	7/16
TPI	18	18	14	14	14	14	13	14
Rivet								
Diameter	.20	.20	—	1/4	1/4	1/4	1/4	1/4
Hole Diameter Large	—	—	.283	—	—	—	—	5/16
Hole Diameter Small	—	—	.255	—	—	—	—	9/32
Length	.63	.63	—	3/4	3/4	3/4	3/4	3/4

1. On all handles the finger guard, standoff (when not cast into the front plate), front plate and back back plate are all cast iron.
2. The through bolt is machined steel.
3. The wing nut is cast iron.
4. The rivet is iron and its length includes the head.
5. #37 has head on the rivet that is 3/8 long.
6. #62 has a unique connection to the saw that does not use a revit and the “saw positioner” is included in the overall length and the lenght of the ferrule. It is 1/2 inch long.
7. FF (Flicker Forge) is a new set of hardware from Flicker Forge. Their current phone number, October 2021, is 403-851-0817. Did not include a wooden handle. Finger guard, standoff, back plate and front plate are made out of cast brass. The rest are made out of machined steel or cast iron (for the wing nut).

Flicker Forge currently, October 2021, has this on their web page.



8. FS (Forest Service) Handle is described in “New Tools for Old Saws, Crosscut Saw Tools”, June, 2005, Publication # 0532-2815-MTDC, page 14, drawing # MTDC-1024.
9. FS rivet is McMaster-Carr #97300A685.
10. FS wingnut is McMaster-Carr #90866A150.

5.5 Saw Data Work Sheet

Item			
Handle			
Diameter Min			
Diameter Max			
Ferrule Length			
Nut Depth			
Length, includes ferrule			
TB Hole			
TB Hole above short end			
Long Split Bolt or Through Bolt			
Length			
Dia in handle			
Length of Threads			
Thread Dia.			
TPI			
Rivet			
Diameter			
Length			